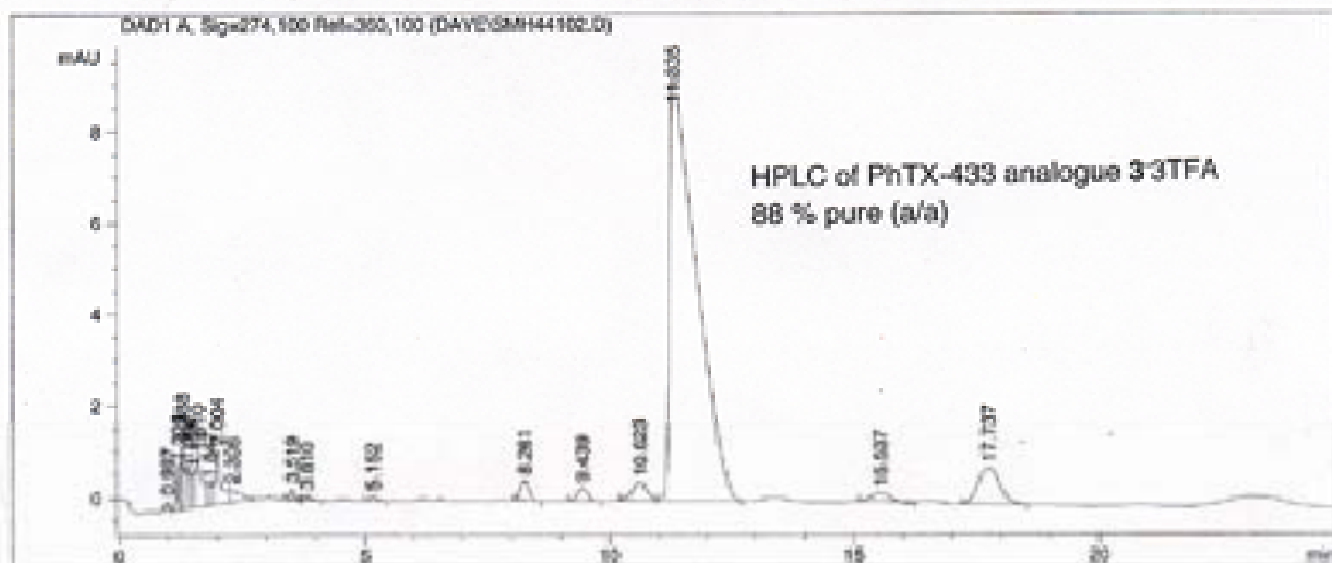


(7) ESMS, NMR and HPLC data for PhTX-433 analogue (3), continued.



Area Percent Report

Sorted By : Signal
Multiplier : 1.0000
Dilution : 1.0000

Signal 1: DAD1 A. Sig=274.100 Ref=360.100

Peak #	RetTime [min]	Type	Width [min]	Area [mAU*s]	Height [mAU]	Area %
1	0.997	VV	0.0613	9.59567e-1	2.18396e-1	0.2153
2	1.223	VV	0.0572	1.59909	9.29570e-1	0.8075
3	1.288	VV	0.0651	6.24334	1.37078	1.4007
4	1.382	VV	0.0743	4.83233	9.04669e-1	1.0841
5	1.521	VV	0.0809	4.45013	7.53612e-1	0.9384
6	1.610	VV	0.1190	9.51404	1.87778	2.1345
7	1.887	VV	0.1041	3.29648	4.57337e-1	0.7396
8	2.004	VV	0.1249	10.44565	1.16208	2.3435
9	2.306	VH	0.2081	4.23864	2.60144e-1	0.9510
10	3.519	HV	0.1003	1.45094	2.16165e-1	0.3255
11	3.810	VP	0.1133	8.97699e-1	8.91485e-2	0.1565
12	5.152	PS	0.1380	9.60853e-1	9.34538e-2	0.2156
13	8.261	HP	0.1987	5.05943	3.97078e-1	1.1351
14	9.439	HP	0.2133	4.21318	2.71073e-1	0.9452
15	10.623	HV	0.2681	8.10489	3.78021e-1	1.8184
16	11.335	VH	0.4861	349.57321	9.43930	78.4280
17	15.527	HP	0.3096	4.80211	1.80988e-1	1.0774
18	17.737	HH	0.3898	23.28341	7.63509e-1	5.2237